

## **How to install the update program for ROBO Master PRO**

### **Outline:**

There is problem when the silhouette original content files were downloaded from the silhouette online store by using the Purchase Online function of ROBO Master-PRO.

Please install the program file by the following procedure before you use the Purchase Online function of ROBO Master-PRO.

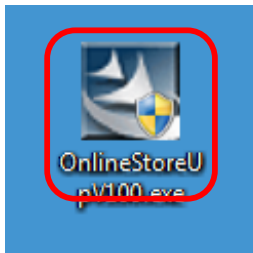
### **Note for installing this update program**

- (a) Please install this program by the login user of administrator.
- (b) Please turn off the Security Software to install this program.
- (c) This program is corresponding for from the version 4.60 of ROBO Master-PRO. Please confirm the version for the ROBO Master-PRO when you will install this program.

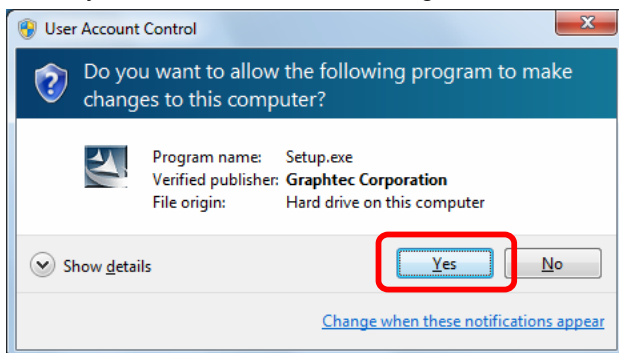
### **Procedure**

The installing procedure explains by the menu of Windows 7.

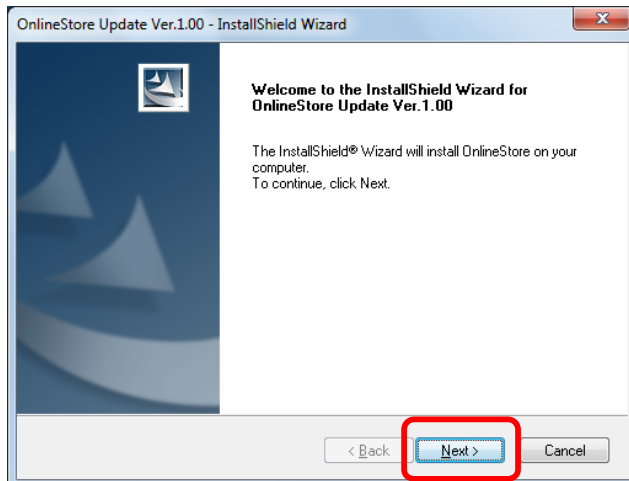
- (1) Uncompressed the update program file to the disk of your PC.
- (2) Double click the below icon to start the update.



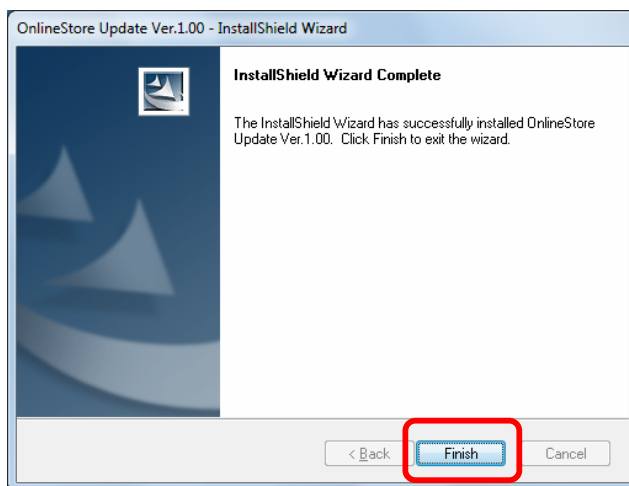
- (3) Click the yes button when the following menu is shown.



- (4) Click the next button to start the installation when the following menu is shown.



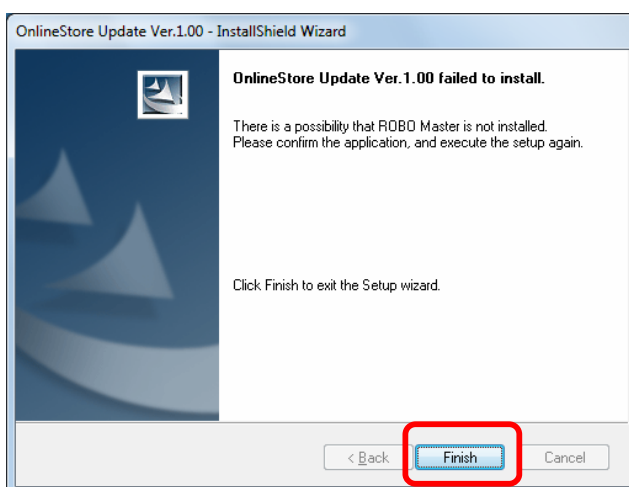
- (5) Click the finish button to finish the installation when the following menu is shown.



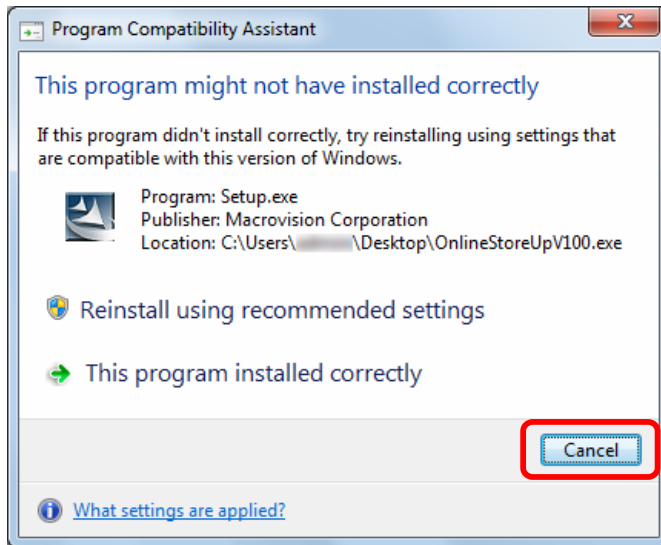
- (6) When the update program is not finished correctly the following menu is shown.

Click the finish button to finish the installation.

Confirm the ROBO Master-PRO is not running when installing the update program. Reinstall this program after the ROBO Master-PRO was closed.



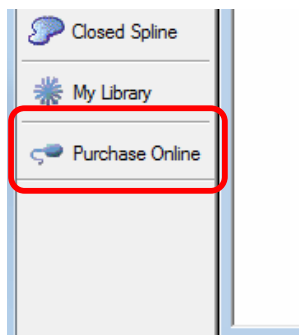
(7) Click the Cancel button when the following menu is shown.



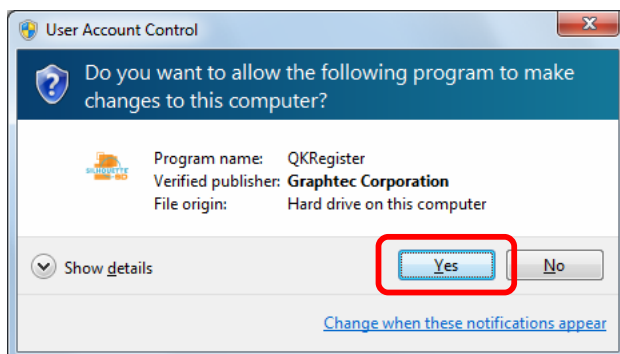
## Confirming the version for the Online Store

(1) Run the ROBO Master-PRO.

(2) Click the Purchase Online button in the menu below.



(3) Click the yes button when the following menu is shown.



(4) The Silhouette Online Store will be start up menu displayed as shown in the picture below.

Confirm the version for the Silhouette Online Store. The version is shown at the bottom left corner of menu.

The update program is completing if the version is later than 2.3.1.0.

